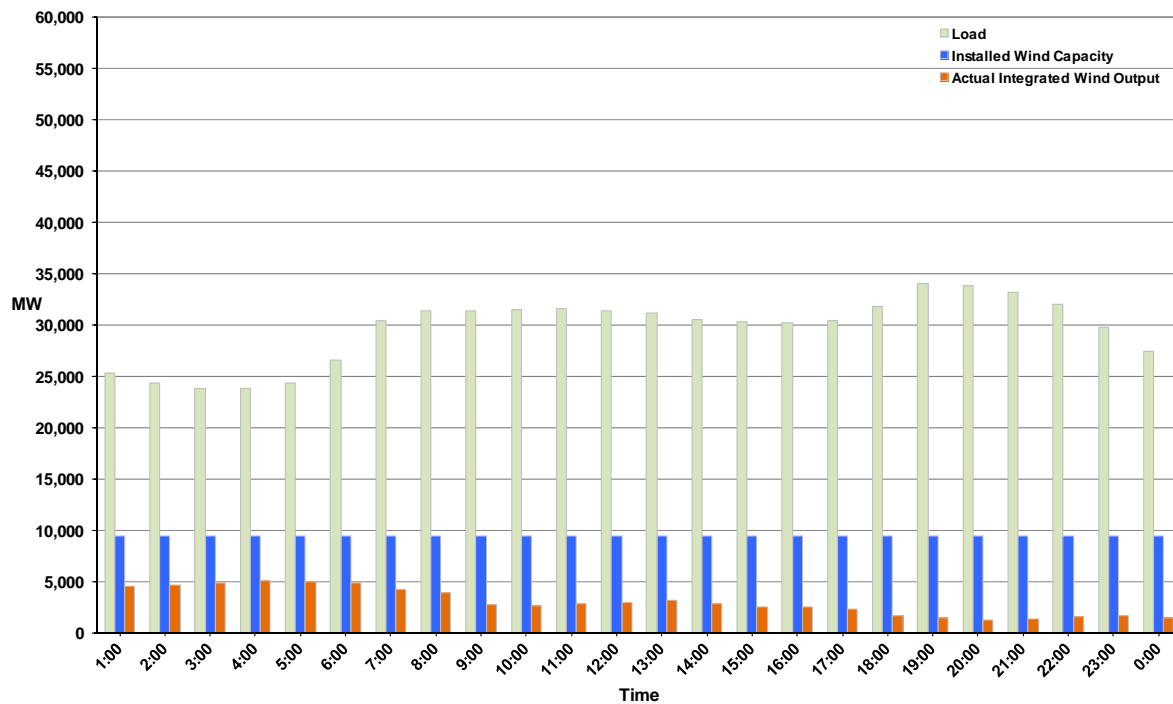




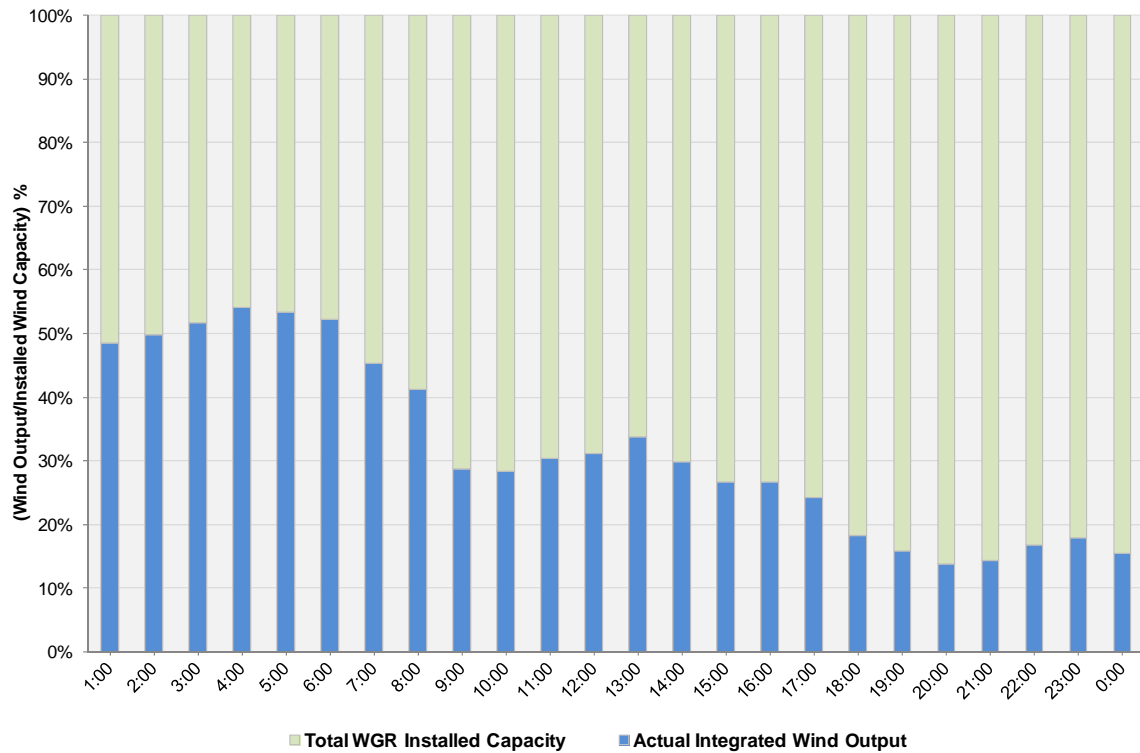
## ERCOT Grid Operations Wind Integration Report: 11/09/11

Peak Load	<b>34,050 MW</b>
Load Peak Hour	<b>19</b>
Wind over Peak	<b>1,489 MW</b>
Wind Record 10/07/11	<b>7,400 MW</b>
Max Wind Value	<b>5,205 MW</b>
Wind Peak Time	<b>03:19</b>
Wind Integration %	<b>21.94%</b>

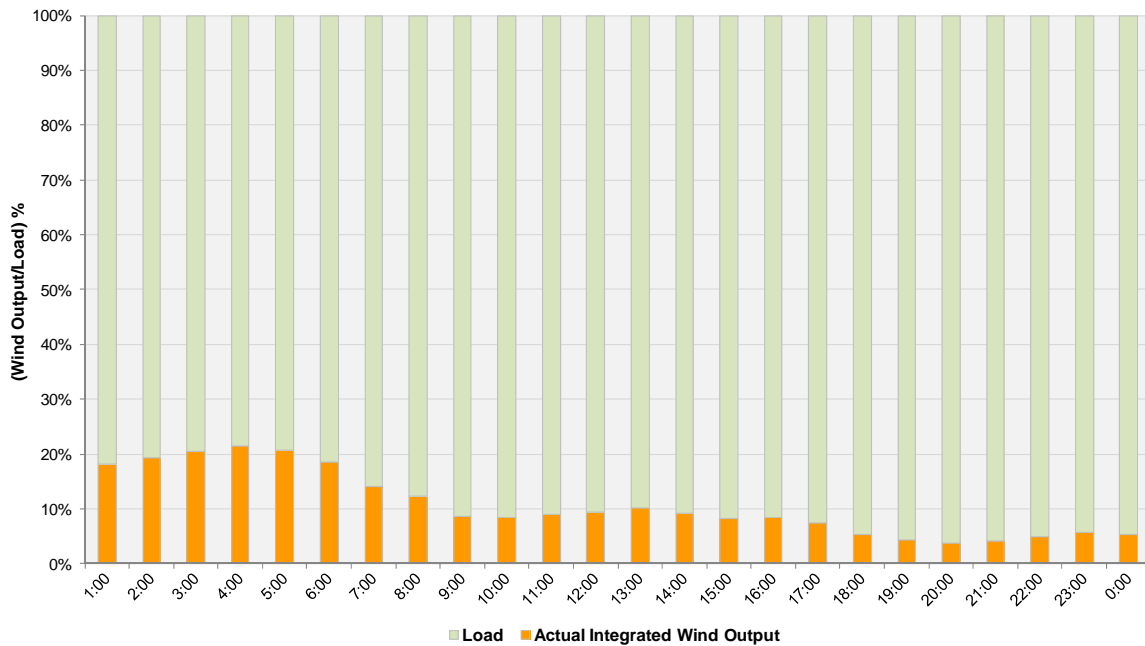
Hourly Average Actual Load vs. Actual Wind Output  
11-09-2011



**Actual Wind Output as a Percentage of the Total Installed Wind Capacity**  
**11-09-2011**



**Actual Wind Output as a Percentage of the ERCOT Load**  
**11-09-2011**



ERCOT Load vs. Actual Wind Output 11/2/2011 - 11/9/2011

